

The New First-Year Student: I've already “done” college, thank you.

Michele Brown

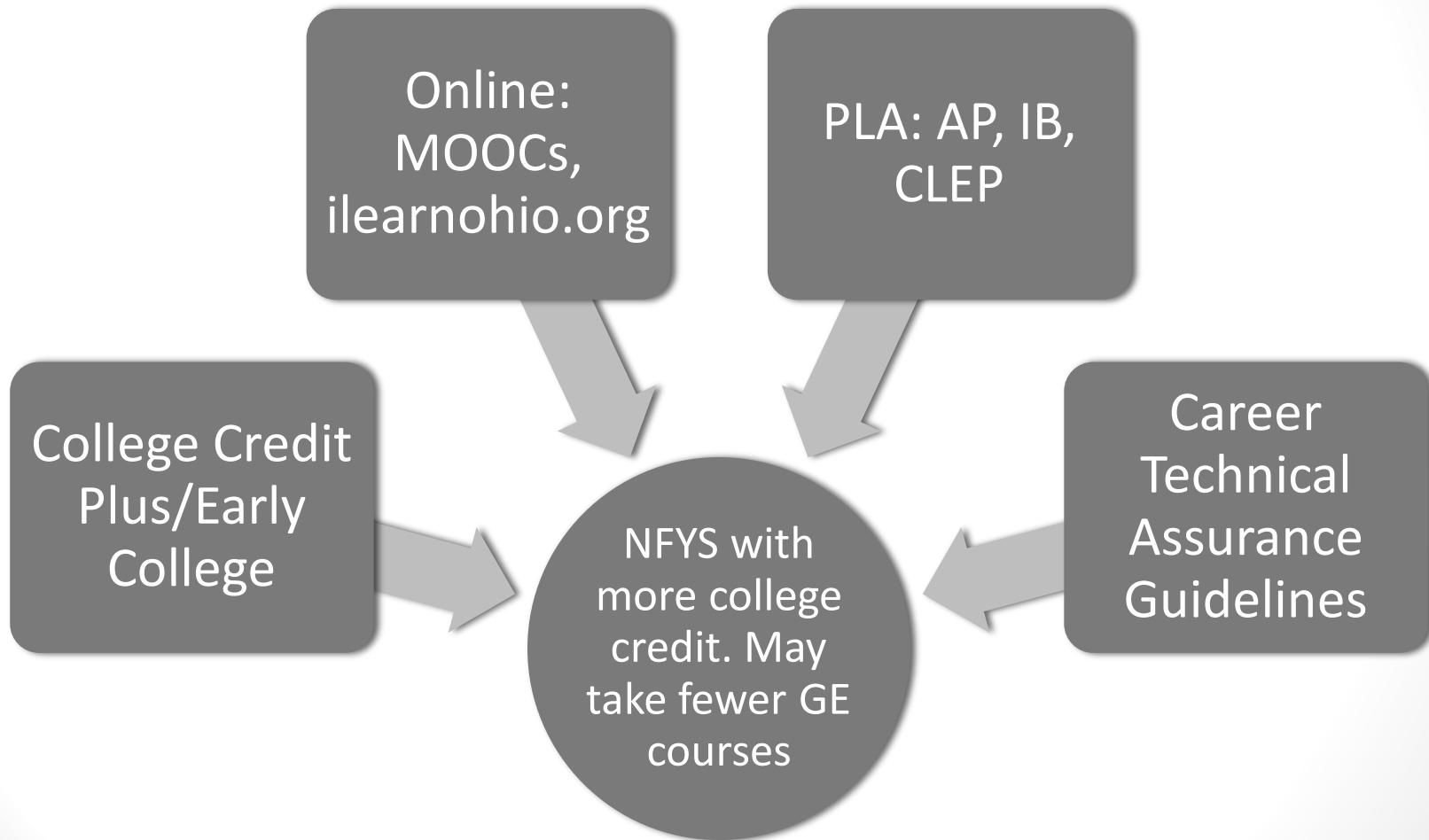
Misty Kemp

Mindy Wright

The Ohio State University

January 2015

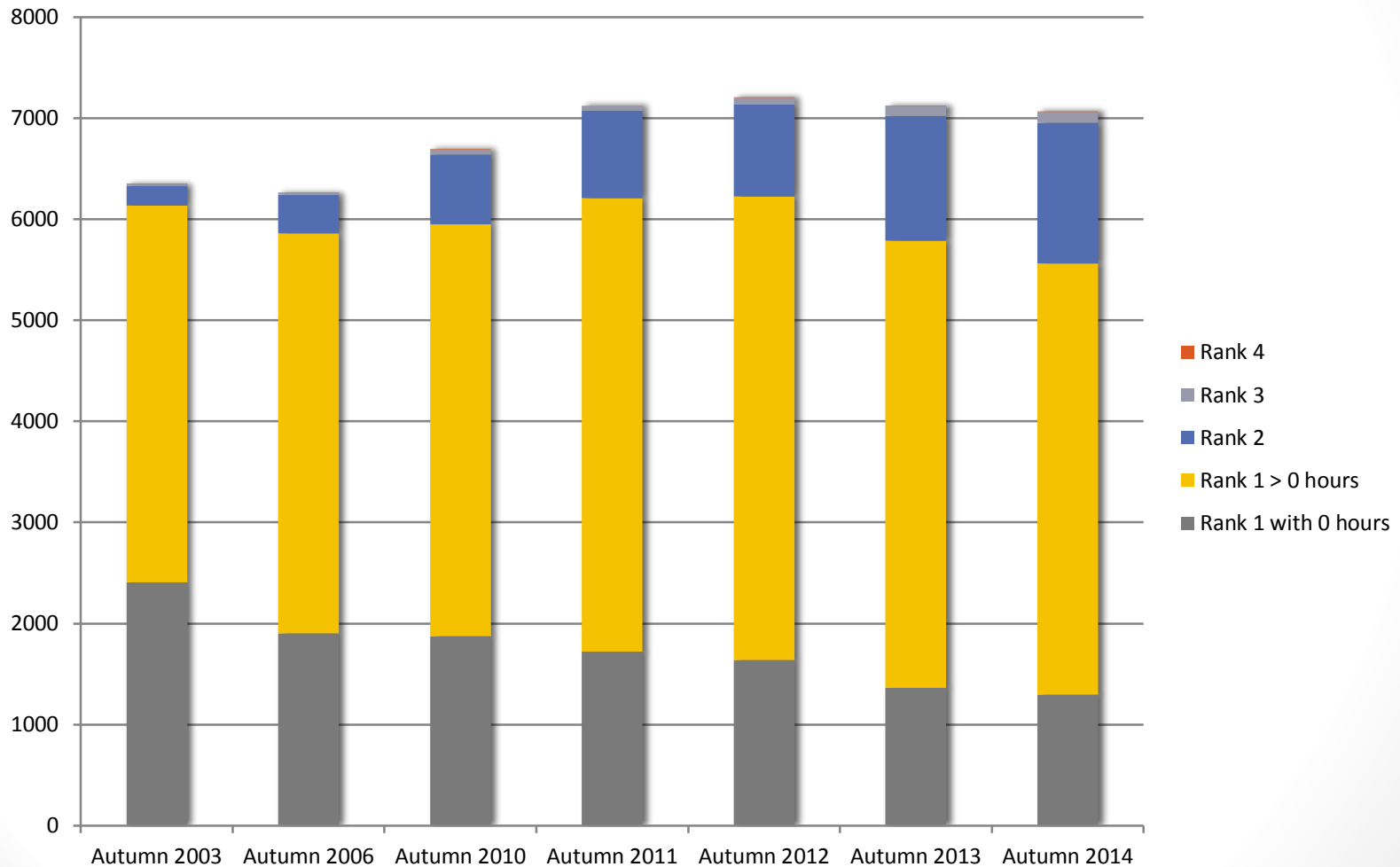
College Completion Efforts



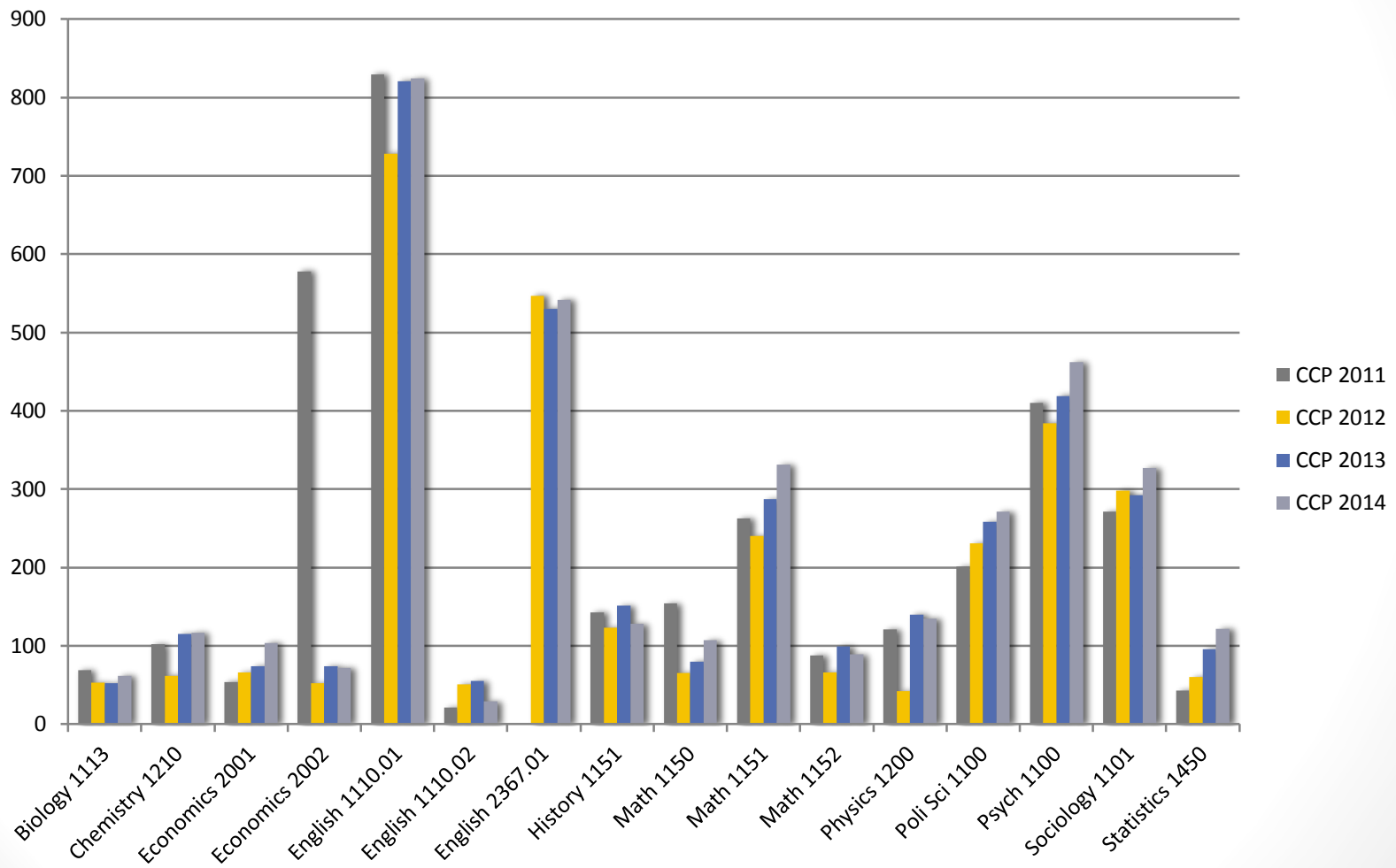
Earning College Credit in High School

- “Old Standbys”
 - Advanced Placement
 - International Baccalaureate
 - Credit by Exam
- “New and Improved”
 - College Credit Plus (CC+)
 - Legislation passed by the Ohio General Assembly and signed by the Governor in June of 2014
 - Implementation starts for Fall 2015 entering students

Incoming Credit (Columbus)



CCP Trends



College Credit Plus Courses Must Be

DUAL CREDIT (high school and college) and
Existing college courses that apply toward a certificate or
degree

➔ While students will need to meet state graduation
requirements, they may do this with a mix of high school
and college courses..

<http://education.ohio.gov/getattachment/Topics/What-s-Happening-with-Ohio-s-Graduation-Requiremen/Graduation-Requirements-2014-2017/Graduation-Checklist-2014.pdf.aspx>

K-12 Schools Must

Develop 15 and 30-credit hour pathways

➔ Students may come with particular course profiles.

Student Admissions

- Criteria to participate in CC+ cannot be higher than admission for entering students.
 - Open Enrollment Schools use the statewide College Readiness Standards.
 - If a student is admitted to a CC+ program, the school district cannot tell the student they cannot participate.
- ➔ Student may come with credit from multiple institutions.

CCP may be delivered

- On college campuses or online
- In high schools taught by college instructors
- In high schools taught by high school instructors with 18 graduate hours or a master's degree in the content field.
- ➔ While learning outcomes are the same, students may come with different experiences of “doing college coursework.”

Early College Experiences Offered Through OSU

❖ The Academy Program

- Outstanding high school students can take university classes on campus and on-line

❖ Seniors to Sophomores

- A campus specific partnership between the university and limited school districts
(CCS → OSU Columbus campus)

❖ Metro Early College High School

- A partnership between OSU, Battelle, and the Educational Service Center of Central Ohio, to create an early college school with a STEM focus (open to any student in Ohio through a lottery draw – 50% Columbus City Schools)

OSU Academy Program

- The Ohio State Academy follows the same competitive admission process as undergraduate admissions (a holistic review process which considers: class rank, test scores, accelerated curriculum, leadership/ work experience, etc.)
- These are high-achieving, outstanding, high school students, that generally come to campus and take classes along-side Undergrads (most have exhausted all or most of their high school's course offerings)
- They are only on campus for their class (generally 1 or 2) and still live at home with their parents/guardians

Seniors To Sophomores

- Admission criteria include: Passing all parts of OGT, GPA, completion of a certain level of high school Math, good attendance & discipline record, and at least 3 years of high school English with a grade of “B” or better
- This is a dual enrollment program that enables academically qualified high school students to earn a year’s worth of high school and college credit simultaneously – students can complete their high school requirements, while also completing up to one year of college (enter college as “sophomores”)

Metro Early College High School

- Metro is a public High School, with a STEM (Science, Technology, Engineering, Math) focus, located on the University's West Campus – Corner of Kenny & Kinnear
- They offer an accelerated curriculum, which allows students to earn more credits at a faster pace (students have the opportunity to earn up to 9 credits each year)
- The curriculum is also based on a “Mastery” system, which ensures that students meet course objectives (learning outcomes), before moving on
- OSU classes are available to those that have Mastery in 18+ Core High School courses, and have demonstrated a high level of motivation, maturity, & academic ability (Gateway & Recs)

Early College Learning Centers

-  : Health Sciences
-  : Engineering
-  : Food Production & Safety
-  : Energy, Economics, & Environment

Pathways designed to allow students to explore possible majors/ careers; while taking early college coursework in a supportive environment, with a cohort of their peers, and extra guidance/ tutoring from a high school faculty member

Each Early College Learning Center is a year-long program that provides students with opportunities to:

1. Earn college credit at OSU for GE courses
2. Participate in research projects and/or internship experiences
3. Engage with community partners and businesses
4. Create and present scientific posters and papers outlining their work through the year

After completing an Early College Learning Center (generally in their 3rd year at Metro), students are generally then full-time college students for their last year (taking 12+ credits each semester)

On average, nearly half of the Metro students graduate from high school with 30+ college semester credit hours

Example Advising Report

THE OHIO STATE UNIVERSITY										DATE: 01/22/2015		ADVISING REPORT		INSTITUTION ATTENDED		CITY			
										THIS IS NOT A TRANSCRIPT		ACADEMY ADVISOR: MISTY KEMP							
<p>MAHAZAH MARYAM AMIR</p> <p>MAHAZAH MARYAM AMIR</p>																			
SUMMARY OF ACADEMIC HISTORY										INSTR UNIT		COURSE NUMBER		COURSE TITLE		CR HR		GRADE FINAL /PREV	
TERM	CMP	PROG	RK	PLAN	GPA	EH	GPA	EH	ACTIONS										
AU13	COL	UACD	1	COS METROSCH	3.000	4	3.000	4.00		AUTUMN 2013	UACD								
SP14	COL	UACD	1	COS METROSCH	3.850	8	3.433	12.00		BIOLOGY	1114	FORM, FUNCT & ECOL	4.0	B					
SU14	COL	UACD	1	COS METROSCH	4.000	4	3.575	16.00		SEM:HR = 4.000	PT = 12.000	PH = 3.000	EH = 4.000	DP = 0.000					
AU14	COL	UACD	1	COS METROSCH	3.433	15	3.506	31.00		CUM:HR = 4.000	PT = 12.000	PH = 3.000	EH = 4.000	DP = 0.000					
SP15	COL	UACD	2	COS METROSCH	0.000	0	3.506	31.00											
										SPRING 2014		UACD							
										BIOLOGY		1113		ENERGY TRANSFRADVL		4.0		B+	
										ENGLISH		1110.01		FIRST-YR ENGL COMP		3.0		A	
										ARTSSCI		1137.18		FRESHMAN SEMINAR		1.0		A	
										SEM:HR = 8.000		PT = 29.200		PH = 3.650		EH = 8.000		DP = 0.000	
										CUM:HR = 12.000		PT = 41.200		PH = 3.433		EH = 12.000		DP = 0.000	
										SUMMER 2014		UACD							
										FRENCH		1101.01		FRENCH 1		4.0		A	
										SEM:HR = 4.000		PT = 16.000		PH = 4.000		EH = 4.000		DP = 0.000	
										CUM:HR = 16.000		PT = 57.200		PH = 3.575		EH = 16.000		DP = 0.000	
										AUTUMN 2014		UACD							
										PHYSICS		1200		MECH,FLUIDS,WAVES		5.0		C+	
										RUSSIAN		1101.01		1ST-YR RUSSIAN 1		4.0		A	
										STAT		1450		INTRO PRACT STAT		3.0		A	
										PSYCH		1100		INTRO PSYCHOLOGY		3.0		A	
										SEM:HR = 15.000		PT = 51.500		PH = 3.433		EH = 15.000		DP = 0.000	
										CUM:HR = 31.000		PT = 108.700		PH = 3.506		EH = 31.000		DP = 0.000	
										SPRING 2015		UACD							
										PHYSICS		1201		ELEC,MAGN.OPTIC,QM		5.0			
										SLAVIC		2367		E EUR IMMIGRATION		3.0			
										SOCIO		1101		INTRO SOCIOLOGY		3.0			
										RUSSIAN		1102.01		ELEM RUSSIAN 2 CT		4.0			
										SEM:HR = 0.000		PT = 0.000		PH = 0.000		EH = 0.000		DP = 0.000	
										CUM:HR = 31.000		PT = 108.700		PH = 3.506		EH = 31.000		DP = 0.000	
										END OF RECORD									

Facts that may surprise you?

- Statistically, the larger majority of these students do not graduate from college any earlier
- Generally, they still struggle academically during their first “official” semester as college undergrads
- Most switch/ change majors more than once before graduation